








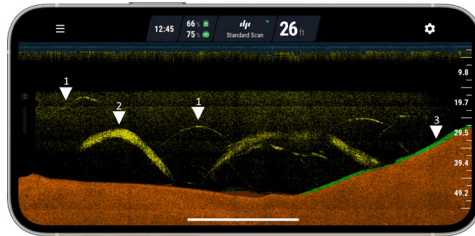
**CASTABLE SONARS 2022**

BRAND MODEL	 Deeper Start	 Deeper PRO	 Deeper PRO+	 Deeper PRO+ 2	 Deeper CHIRP 2
<b>OTHER INFO</b>					
Warranty	2 year warranty	2 year warranty	2 year warranty	2 year warranty	5 year warranty
<b>MAIN FEATURES</b>					
Connectivity	Wifi	Wifi	Wifi	Wifi	Wifi
Casting distance	50 m / 165 ft	100 m / 330 ft	100 m / 330 ft	100 m / 330 ft	120 m / 394ft
Min depth	0.5 m / 1,6 ft	0.5 m / 1,6 ft	0.5 m / 1,6 ft	0.15 m / 6 in	0.15 m / 6 in
Max depth	50 m / 165 ft	80 m / 260 ft	80 m / 260 ft	100 m / 330 ft	100 m / 330 ft
Weight	65g / 2.3 oz	100g / 3.5 oz	100g / 3.5 oz	90g / 3.2 oz	95g / 3.3 oz
Sampling cone /angle	" Single beam 40° @ 120 kHz"	"Dual beam 15° @ 290 kHz 55° @ 90 kHz"	"Dual beam 15° @ 290 kHz 55° @ 90 kHz"	"Triple beam 7° @ 675 kHz 20° @ 240 kHz 47° @ 100 kHz "	"Triple beam 7° @ 675 kHz CHIRP 20° @ 240 kHz CHIRP 47° @ 100 kHz CHIRP"
Target separation	5 cm / 2 in	2,5 cm / 1 in	2,5 cm / 1 in	1 cm / 0.4 in (narrow beam)	1 cm / 0.4 in (narrow beam)
Temperature range	0 to 40C / 32F to 104F	-20 to 40C / -4F to 104F	-20 to 40C / -4F to 104F	-20 to 40C / -4F to 104F	-20 to 40C / -4F to 104F
GPS	NO	NO	YES	<b>YES</b>	<b>NO</b>
Scanning rate	up to 10/s	up to 15/s	up to 15/s	up to 15/s	up to 15/s
Working time	up to 6 hours	up to 6 hours	up to 6 hours	Up to 9 hours	<b>up to 15 hours</b>
Charging time	2.5 hours	2 hours	2 hours	<b>1 hour 15min</b>	<b>110 min.</b>
Sonar technology	Standard 2D sonar technology	Standard 2D sonar technology	Standard 2D sonar technology	Standard 2D sonar technology	<b>CHIRP</b>
Sonar mode	Basic	Raw / Basic	Raw / Basic	Raw / Basic	Raw / Basic
Distance measuring (from sonar to smartphone)	NO	NO	NO	YES	YES
<b>PACKAGE CONTENT</b>					
	START sonar	PRO sonar	PRO+ sonar	PRO+ 2 sonar	CHIRP 2 sonar
	Swivel	Mounting screws	Mounting screws	Mounting screws	Mounting screws
	USB cable	USB cable	USB cable	USB cable	USB cable
	Documentation	Neoprene pouch Documentation	Neoprene pouch Documentation	Neoprene pouch Documentation	Neoprene pouch Documentation Night cover
<b>FEATURES</b>					
Can be used for ice fishing	NO	YES	YES	YES	YES
Can create bathymetric maps with boat	NO	YES	YES	YES	YES
Can create bathymetric maps from shore	NO	NO	YES	YES	NO
Free bathymetric maps (community maps)	YES (for 3 months)	YES (for 3 months)	YES (for 3 months)	YES (for 3 months)	YES (3 months)
Can be mounted on a boat or kayak	NO	YES	YES	YES	YES
Can be mounted on a bait boat (RC boat)	NO	YES	YES	YES	YES
Fish ID (marks fishes with fish icons)	YES	YES	YES	YES	YES
Weed ID (shows weed with green color)	YES	YES	YES	YES	YES
Water temperature sensor	NO	YES	YES	YES	YES
Mark points of interest on the map	YES	YES	YES	YES	YES
Night fishing mode (blinking light on the sonar)	YES	YES	YES	YES	YES
A-scope (Vertical flasher)	NO	YES	YES	YES	YES
Different sonar screen color palettes	YES	YES	YES	YES	YES
<b>ADVANCED FEATURES</b>					
Option to export raw bathymetric data (coordinates, depth, timestamp)	NO	YES	YES	YES	YES
NMEA0183 data streaming over UDP	NO	NO	NO	YES	NO

# deeper

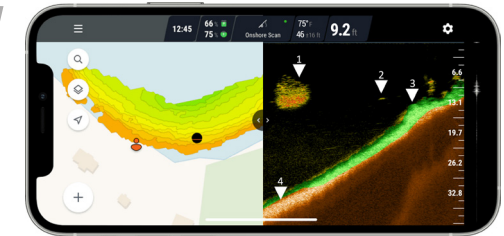
## start

1. Arches and odd-shaped lines show individual fish.
2. Spotted and thick arches show schools of fish.
3. Green colour indicates vegetation or a soft bottom.



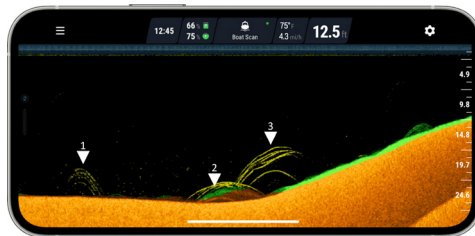
## pro+ 2

1. Densely packed school of fish.
2. Individual fish shown as a slightly curved line/arch.
3. Green colours show vegetation.
4. A very bright bottom line colour indicates a hard bottom.



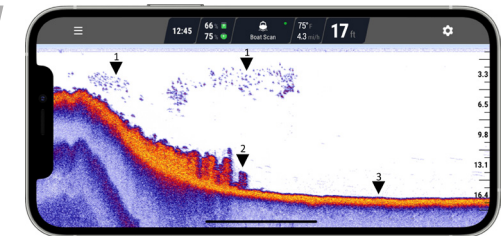
## pro

1. Arches indicate fish that passed through the sonar cone, or the sonar passed over them.
2. A bump on the bottom could be brush or a fallen tree.
3. These arches indicate 4-6 fish gathered around the structure (2).



## chirp+ 2

1. Loosely packed school of fish.
2. Shapes like this emerging from the bottom normally indicate vegetation.
3. Colours indicate how hard the sound return was. Blue – weak, red – medium, yellow – hard. The bright yellow line tells us the bottom is hard.



## Q&A

**Can you use Deeper sonar in the salty water (sea, ocean)?**

Yes, it can be used in salty water.

**Do you need any kind of cell connection or internet on the phone to use the Deeper?**

No, you don't need any cell connection or internet connection to use the Deeper. Even if your smartphone has no SIM card, it will still work with the Deeper.

**I've heard that sometimes Deepers have issues with connection range. Is it true?**

Connection issues happen because of improper phone settings or if the device is not used according to the manual. There are extensive manuals on how to properly adjust the smartphone settings and improve the connection, which can be found on <https://deeperonar.com/support>

**What rod and line should I use to cast the Deeper?**

We recommend rods with at least 80-90g casting weight (feeder, spod rods are great for that). As for the line, at least 16lbs (7kg) braid line should be used. The stronger – the better.

**What do I do if I've lost my Deeper, or if it was stolen?**

It might be possible to track the sonar. Contact Deeper at [support@deeper.eu](mailto:support@deeper.eu) for help.

**Does Deeper offer repair services after the warranty has ended (battery replacement, electronic repairs)?**

Yes, Deeper offers such services all across the EU, USA, Canada and other countries. Contact [support@deeper.eu](mailto:support@deeper.eu) for help.